



QPAC's
**OUT OF
THE BOX**
FESTIVAL FOR CHILDREN
EIGHT YEARS & UNDER

SCHOOLS QUICK REFERENCE FAQs

QUEENSLAND PERFORMING ARTS CENTRE
CORNER OF MELBOURNE AND GREY STREET
SOUTHBANK, QLD 4101



**Queensland Performing Arts Centre rests on the lands of the
Yuggera and Turrbal peoples.**

**We acknowledge the Traditional Custodians of this country
and recognise their rich cultural heritage and enduring
connection to the land, waters and skies.**

**Aboriginal and Torres Strait Islander peoples are this
country's original storytellers, and it is our privilege to
continue to share stories and be a place of gathering on this
land that has been a meeting place for millennia.**



Contents

Welcome to QPAC	1
Preparing for the Festival	2
Your Day at QPAC	3
Festival Map	4
Logistics for your visit	5
Your Festival Friends	6
Photography & Resources	7



Welcome to QPAC

Welcome to QPAC's *Out of the Box*!

This year's *Out of the Box* is a full venue takeover, packed with theatre, workshops, free events, and activities across QPAC and cultural partners – State Library of Queensland, Queensland Museum, and QAGOMA. Since 1992, *Out of the Box* has celebrated children's voices, making them the heart of the festival.

We're creating a welcoming, inclusive environment where children can explore, play, and share stories. Every experience is designed with children in mind – from softly dimmed lights to seating that allows them to move, react, and engage as they naturally would, with staff ready to support each child's unique needs.

Inspired by the theme of Hope, we invite you to experience the festival with the wonder and curiosity of a child – where joy, discovery, and fun are always at the heart of the show.

This FAQ sheet is your **quick guide for a smooth festival day**. For detailed planning, supervision, transport, performance tips, curriculum links, and paperwork, please refer to the [Educators Guide](#).

What to Expect Inside Theatres

- Lights softly dim (never total darkness).
- Children can wiggle, move in their seats, step in/out for breaks or toilets.
- Clapping, cheering, singing, dancing, and asking questions are welcome!
- Some theatre-goers may make sounds, fidget, or use noise-cancelling headphones – and that's okay.
- Staff will be on hand, and dedicated Slow Down Spaces are available.



Preparing for the festival

Free Activities

There are so many free events to explore at *Out of the Box*! The festival team has carefully curated these experiences to enrich and extend your students' engagement through an arts-rich, participatory, play-based approach. From hands-on activities to surprise pop-ups, these free activities offer exciting opportunities for creative exploration and imaginative discovery throughout the festival.

[Click here](#) to see all the free events available at the festival.

Please note: Free activities are popular, so consider backup options in case your first choice is full.

Slow Down Spaces

Need a break from the festival frenzy? Swing by our Slow Down Zones—where tiny art lovers can hang out with fewer crowds and creative vibes!

- The Growing Sewing – Concert Hall Foyer
- Voice Lab – Concert Hall Foyer Mezzanine
- Crown Crafting – Cascade Court
- Nhamul PlaySpace – Playhouse Lounge
- Tree of Hope – The Parlour, State Library Queensland



Accessibility

- **Venues:** All wheelchair accessible, with lifts and accessible toilets.
- **Special Requirements:** Notify during booking to arrange seating/assistance. If you need to update your booking information, please contact QTIX:
 - Email: groups@qpac.com.au
 - Phone: (07) 3840 7466 or (07) 3842 9772 between 9am and 5pm, Monday to Friday.
- **For further accessibility information** visit the QPAC [Accessibility Page](#).

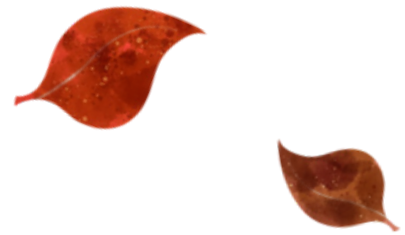
Your day at QPAC

Before the Day

- Organise your tickets and student groupings in advance to ensure easy entrance to the theatre/performance space. Please remember to bring your tickets on the day.
 - If you have any questions regarding your booking contact QTIX Groups – (07) 3840 7466 between 9am and 5pm, Monday to Friday.
- Plan transport and arrival times.
- Request a Festival Buddy if needed. If you haven't requested a Buddy at the time of booking but would like to add one now, please email volunteers.ootb@qpac.com.au.

Getting Here

- **Walking:** Cross via Victoria/Neville Bonner Bridge.
- **Public Transport:**
 - **Train:** South Brisbane Station
 - **Bus:** Cultural Centre Busway
 - **CityCat:** South Bank terminal
- **Charter Bus Drop-off Zones:** Grey Street or Stanley Place; Wonderbox attendees at Russell Street.
- **Social Stories:** Social Stories with images and simple language for what to expect at QPAC will be available closer to the festival to help prepare students and visitors. These will be accessible on our dedicated [Accessibility page](#).



On Arrival

- **Arrive:** 30 minutes early to orient your group and use facilities.
- **Moving Between Venues:** Allow 15 minutes. Use designated crossings.
- **Running Late?:** Call QTIX Groups (07) 3840 7466 and notify your Buddy.
- **Festival Map:** Included on page 4, for further information, please visit qpac.com.au/ootb.

brisbane river



cultural
centre
busway



busway overpass



This way to

18 19



STATE LIBRARY
OF QUEENSLAND

20 21

QAGOMA

17

QUEENSLAND
MUSEUM

LYRIC THEATRE ENTRY

- 1 The Gruffalo *[Lyric Theatre]*
- 2 Mindful Me Health & Wellbeing Workshop *[Lyric Balcony Foyer]*
- 3 Wolfgang in the Stars *[Concert Hall]*
- 4 Sing on Country Music Workshops *[Concert Hall Balcony Foyer]*

CREMORNE THEATRE ENTRY

- 5 Gurril Storm Bird *[Cremorne Theatre]*
- 6 Club Origami *[Tony Gould Gallery]*
- 7 For Mothers / Pūuna Sanctuary *[Lyric Lounge]*
- 8 Nhamul PlaySpace *[Playhouse Lounge]*



LYREBIRD
RESTAURANT

14

CASCADE
COURT



MELBOURNE
STREET
GREEN

15



CONCERT HALL
THIS ENTRANCE FOR
concert hall balcony foyer

3 4



PLAYHOUSE ENTRY

- 9 Where is the Green Sheep? *[Playhouse]*
- 10 Bluey Puppetry Workshop *[Playhouse Balcony Foyer]*
- 11 Green Sheep: You and Me Workshop *[Playhouse Rear Stage]*
- 12 The Lost Lending Library *[Playhouse Band Room]*
- 13 Wonderbox *[Studio 1]*
- 14 Little Chefs Cooking Workshops
- 15 Let's Dance

LYRIC
THEATRE
THIS ENTRANCE FOR
lyric balcony foyer

1 2



BOX OFFICE



qpac tunnll

16



south brisbane railway station

QPAC TUNNEL

- 16 Jarjum Life Museum
- 17 Spirits of the Wild Workshops *[School Groups only]*
- 18 State Library Scavenger Hunt
- 19 Tree of Hope *[SLQ Parlour]*

QUEENSLAND MUSEUM

17 Spirits of the Wild Workshops *[School Groups only]*

18 State Library Scavenger Hunt

19 Tree of Hope *[SLQ Parlour]*

GALLERY OF MODERN ART

- 20 Art Box for Kids: Mandy Quadrio
- 21 Moments of Wonder

CREMORNE THEATRE

THIS ENTRANCE FOR
tony gould gallery
lyric lounge
playhouse lounge

5 6 7 8



PLAYHOUSE
THIS ENTRANCE FOR
playhouse balcony foyer
playhouse rear stage
playhouse band room

9 10 11 12



THIS ENTRANCE FOR
studio 1

13



OUT OF THE BOX
FESTIVAL FOR CHILDREN EIGHT YEARS & UNDER

grey street

SLOW DOWN SPACES



Need a break from the festival frenzy?
Swing by our Slow Down Zones—where
tiny art lovers can hang out with fewer
crowds and creative vibes!

The Growing Sewing *[Concert Hall Foyer]*
Voice Lab *[Concert Hall Foyer Mezzanine]*
Crown Crafting *[Cascade Court]*

Nhamul PlaySpace *[Playhouse Lounge]*
Tree of Hope *[The Parlour,*
State Library Queensland]



first aid



toilets



ACCESSIBLE
toilets



information



baby
change



drain
parking



tree of hope
location



slow down
spaces



coffee



food

LEGEND

Logistics for your visit

Lunches & What to Bring



- **Lunch Drop-Off:** School lunches can be dropped off at Cascade Court upon arrival.
- **No cold storage:** No refrigeration available – advise parents to pack lunches with ice bricks as needed.
- **Small bags recommended:** with snacks and a water bottle which can be taken into theatres.
- **Water Bottles:** Please note that glass water bottles are not permitted in the theatres and we encourage schools to avoid bringing glass to the site. There will be water top up stations available to refill your water throughout the day.
- **Lunch Areas:** Outdoor lunch spaces are available at the South Bank Cultural Forecourt and Maiwar Green (between QAGOMA & SLQ). If it rains, staff and volunteers will direct you to undercover lunch areas.

Toilets & First Aid

- **Toilets:** Marked on the festival map; staff and volunteers can assist.
- **First Aid:** Marked on the festival map; for emergencies please alert one of the Front of House Staff.

Safety

At QPAC's *Out of the Box* festival we are committed to the safety and joy of all our young visitors. To ensure we take appropriate and considered actions to uphold our duty of care, we will ensure all temporary visitors who interact with school groups are appropriately vetted by the QLD Governments' Blue Card system. This includes:

- All artists performing at the festival
- All volunteers at the festival



If you have any concerns while you are at the festival, please speak to any of our Front of House staff members working at each venue, easily identified by their QPAC uniforms.

Your Festival Friends

Volunteers

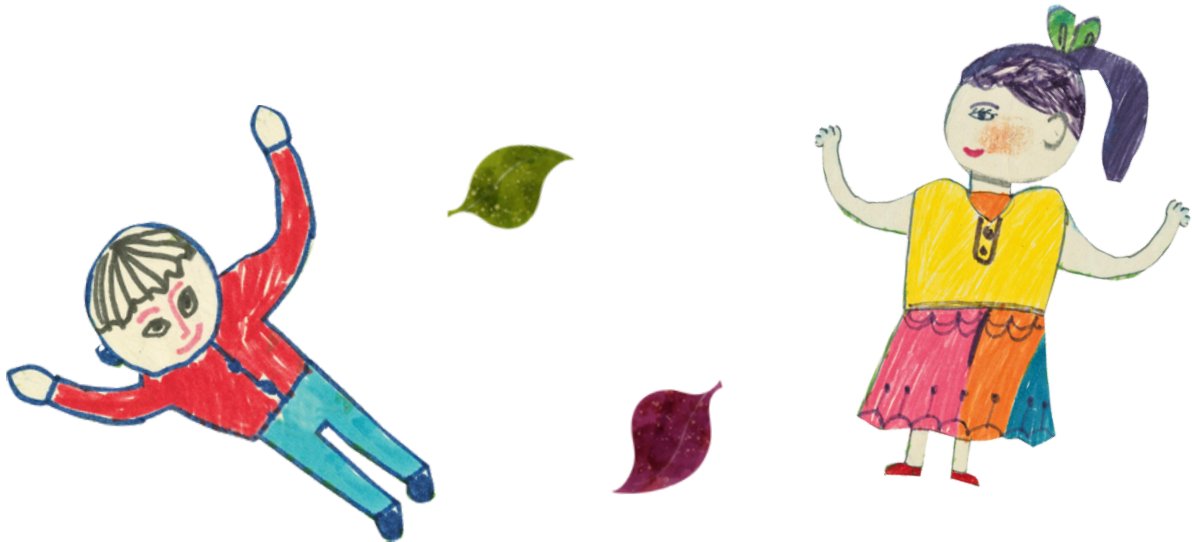
Volunteers, identifiable by their brightly coloured t-shirts and lanyards, will be highly visible across the Cultural Precinct to provide directions and up-to-date program information. All volunteers hold valid Blue Cards.

Buddies

A Buddy is a volunteer who will meet your group when you arrive, help you safely navigate the festival site, and ensure you are on time for your performances and workshops. They will be on hand to provide information and assistance throughout the day, and help you get the most out of your *Out of the Box* experience.

Festival Buddies are a mixture of QPAC full-time and part-time employees and volunteers. Please note that the QPAC employees who are Buddies are not required to hold a Blue Card to occupy this role, although some may do, however will be there as venue support to the school chaperones.

The Buddy Coordinator will contact you in the **week of June 9**.



Photography & Resources

Photography & Filming

- Performances: Photography may be permitted at some performances. Look out for clear signage at the entrance of each show indicating whether photography is allowed. If unsure, please check in with our friendly Front of House team.
- Festival Photography & Videography: Roving photographers and videographers will be present throughout the festival to capture its vibrant atmosphere and performances.

Educational Resources and Curriculum Links

Our education resources have been carefully crafted by our Education Manager and a team of experienced educators to extend and enrich the festival experience. These documents explicitly connect performances to achievement standards and content descriptors in the **Australian Curriculum (Version 9.0)** and the **Early Years Learning Framework (Version 2.0)**.

[Education Resources](#)

The festival aligns with the aims of The Arts syllabus, celebrating the importance of students experiencing the arts beyond the classroom.

If you have any questions regarding these resources, please contact our Education Manager at education@qpac.com.au.

